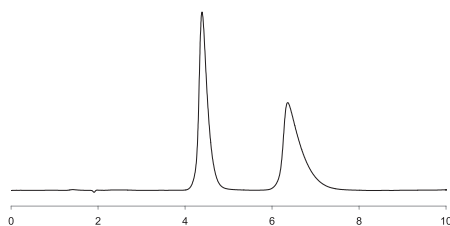


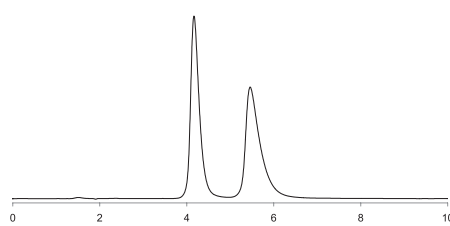
## 7-7. Enantiomer separations-ChiroSil ME

## DL-Methionine



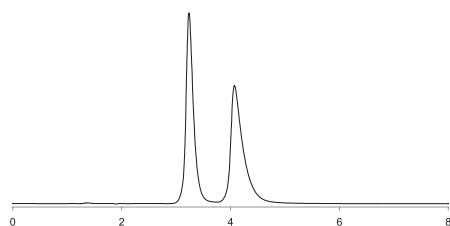
Column: ChiroSil ME NF RCA(+) 5 $\mu$ m  
 Dimension: 150 X 4.6mm  
 Mobile phase: 0.01% H<sub>3</sub>PO<sub>4</sub> / MeOH = 30 / 70  
 Flow rate: 1.0 ml/min  
 Detection: UV 210nm  
 Temperature: 20°C  
 $k'$  : 1.32  $\alpha$  : 1.79

## DL-DOPA



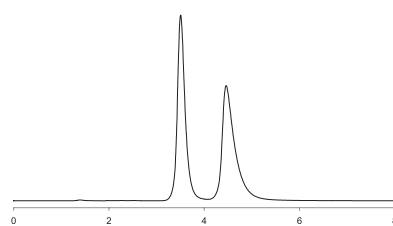
Column: ChiroSil ME NF RCA(+) 5 $\mu$ m  
 Dimension: 150 X 4.6mm  
 Mobile phase: 0.01% H<sub>3</sub>PO<sub>4</sub> / MeOH = 30 / 70  
 Flow rate: 1.0 ml/min  
 Detection: UV 210nm  
 Temperature: 20°C  
 $k'$  : 1.20  $\alpha$  : 1.57

## DL-Phenylalanine



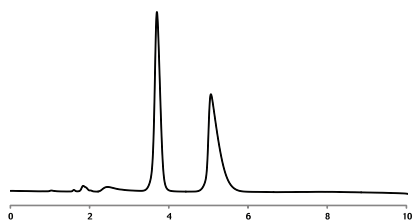
Column: ChiroSil ME NF RCA(+) 5 $\mu$ m  
 Dimension: 150 X 4.6mm  
 Mobile phase: 0.01% H<sub>3</sub>PO<sub>4</sub> / MeOH = 30 / 70  
 Flow rate: 1.0 ml/min  
 Detection: UV 210nm  
 Temperature: 20°C  
 $k'$  : 0.71  $\alpha$  : 1.62

## DL-Tryptophane



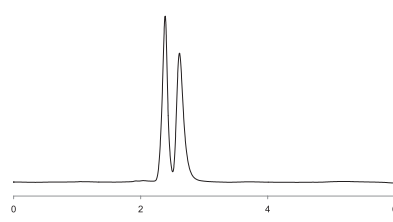
Column: ChiroSil ME NF RCA(+) 5 $\mu$ m  
 Dimension: 150 X 4.6mm  
 Mobile phase: 0.01% H<sub>3</sub>PO<sub>4</sub> / MeOH = 30 / 70  
 Flow rate: 1.0 ml/min  
 Detection: UV 210nm  
 Temperature: 20°C  
 $k'$  : 0.86  $\alpha$  : 1.59

## DL-Norvaline



Column: ChiroSil ME NF RCA(+) 5 $\mu$ m  
 Dimension: 150 X 4.6mm  
 Mobile phase: 10 mM Acetic acid / MeOH = 30 / 70  
 Flow rate: 1.0 ml/min  
 Detection: UV 210nm  
 Temperature: 20°C  
 $k'$  : 1.01  $\alpha$  : 1.73

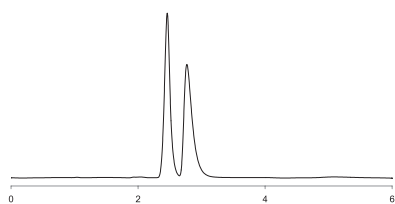
## DL-Leucine



Column: ChiroSil ME NF RCA(+) 5 $\mu$ m  
 Dimension: 150 X 4.6mm  
 Mobile phase: 10mM Acetic acid / MeOH = 30 / 70  
 Flow rate: 1.0 ml/min  
 Detection: UV 210nm  
 Temperature: 20°C  
 $k'$  : 0.14  $\alpha$  : 1.79

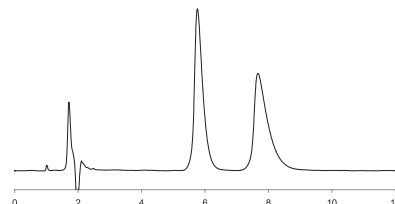
## 7-7. Enantiomer separations-ChiroSil ME

## DL-Norleucine



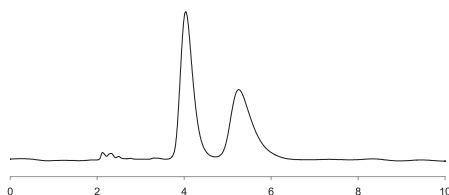
Column: ChiroSil ME NF RCA(+) 5 $\mu$ m  
 Dimension: 150 X 4.6mm  
 Mobile phase: 10mM Acetic acid / MeOH = 30 / 70  
 Flow rate: 1.0 ml/min  
 Detection: UV 210nm  
 Temperature: 20°C  
 $k'$  : 0.17  $\alpha$  : 1.86

## DL-Tryosine



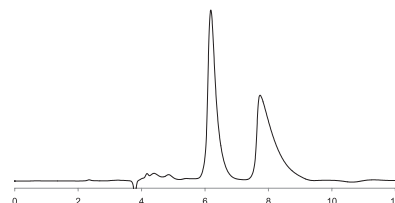
Column: ChiroSil ME NF RCA(+) 5 $\mu$ m  
 Dimension: 150 X 4.6mm  
 Mobile phase: 0.01% H<sub>3</sub>POP<sub>2</sub> / MeOH = 15 / 85  
 Flow rate: 1.0 ml/min  
 Detection: UV 210nm  
 Temperature: 40°C  
 $k'$  : 1.91  $\alpha$  : 1.51

## DL-Arginine



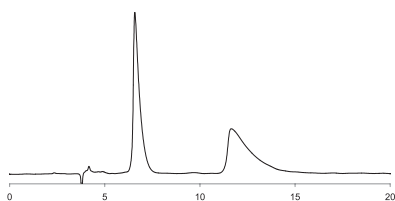
Column: ChiroSil ME NF RCA(+) 5 $\mu$ m  
 Dimension: 150 X 4.6mm  
 Mobile phase: 5mM HClO<sub>4</sub> / MeOH = 50 / 50  
 Flow rate: 0.5 ml/min  
 Detection: UV 210nm  
 Temperature: 10°C  
 $k'$  : 0.66  $\alpha$  : 1.40

## DL-Alanine



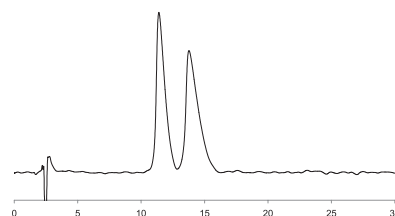
Column: ChiroSil ME NF RCA(+) 5 $\mu$ m  
 Dimension: 150 X 4.6mm  
 Mobile phase: 5mM HClO<sub>4</sub> / MeOH = 50 / 50  
 Flow rate: 0.5 ml/min  
 Detection: UV 210nm  
 Temperature: 20°C  
 $k'$  : 0.63  $\alpha$  : 1.65  $R_s$  : 3.96

## DL-Serine



Column: ChiroSil ME NF RCA(+) 5 $\mu$ m  
 Dimension: 150 X 4.6mm  
 Mobile phase: 5mM HClO<sub>4</sub> / MeOH = 50 / 50  
 Flow rate: 0.5 ml/min  
 Detection: UV 210nm  
 Temperature: 20°C  
 $k'$  : 0.74  $\alpha$  : 2.82  $R_s$  : 5.87

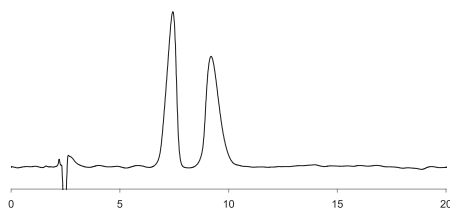
## DL-Asparagine



Column: ChiroSil ME NF RCA(+) 5 $\mu$ m  
 Dimension: 150 X 4.6mm  
 Mobile phase: 5mM H<sub>2</sub>SO<sub>4</sub> / MeOH = 20 / 80  
 Flow rate: 0.8 ml/min  
 Detection: UV 210nm  
 Temperature: 25°C  
 $k'$  : 3.63  $\alpha$  : 1.22

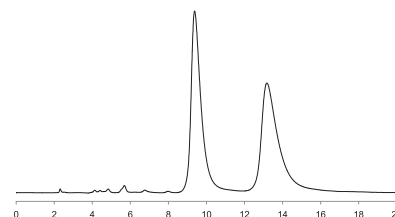
## 7-7. Enantiomer separations-ChiroSil ME

## DL-Valine



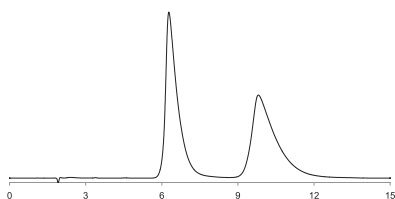
Column: ChiroSil ME NF RCA(+) 5 $\mu$ m  
 Dimension: 150 X 4.6mm  
 Mobile phase: 5mM H<sub>2</sub>SO<sub>4</sub> / MeOH = 20 / 80  
 Flow rate: 0.8 ml/min  
 Detection: UV 210nm  
 Temperature: 25°C  
 $k'$  : 2.02  $\alpha$  : 1.35

## DL-Threonine



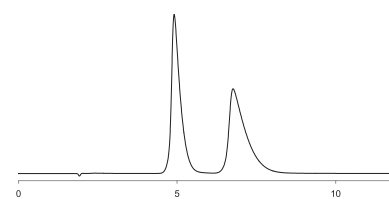
Column: ChiroSil ME NF RCA(+) 5 $\mu$ m  
 Dimension: 150 X 4.6mm  
 Mobile phase: 5mM HClO<sub>4</sub> / MeOH = 50 / 50  
 Flow rate: 0.5 ml/min  
 Detection: UV 210nm  
 Temperature: 20°C  
 $k'$  : 1.47  $\alpha$  : 1.68  $R_s$  : 5.45

## DL-Homophenylalanine



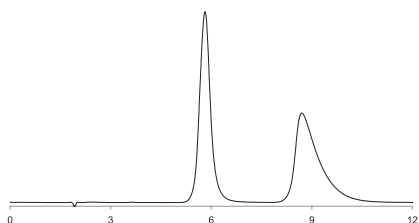
Column: ChiroSil ME NF RCA(+) 5 $\mu$ m  
 Dimension: 150 X 4.6mm  
 Mobile phase: 0.01% H<sub>3</sub>PO<sub>4</sub> / MeOH = 30 / 70  
 Flow rate: 1.0 ml/min  
 Detection: UV 210nm  
 Temperature: 20°C  
 $k'$  : 2.27  $\alpha$  : 1.81

## DL-4 - Chloro - phenylalanine



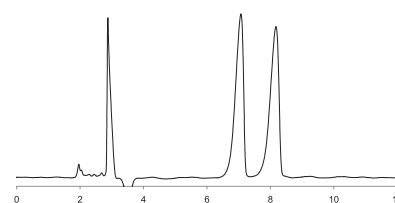
Column: ChiroSil ME NF RCA(+) 5 $\mu$ m  
 Dimension: 150 X 4.6mm  
 Mobile phase: 0.01% H<sub>3</sub>PO<sub>4</sub> / MeOH = 40 / 60  
 Flow rate: 1.0 ml/min  
 Detection: UV 210nm  
 Temperature: 40°C  
 $k'$  : 0.78  $\alpha$  : 1.58

## DL-Pyridylalanine



Column: ChiroSil ME NF RCA(+) 5 $\mu$ m  
 Dimension: 150 X 4.6mm  
 Mobile phase: 0.01% H<sub>3</sub>PO<sub>4</sub> / MeOH = 30 / 70  
 Flow rate: 1.0 ml/min  
 Detection: UV 210nm  
 Temperature: 20°C  
 $k'$  : 2.03  $\alpha$  : 1.74

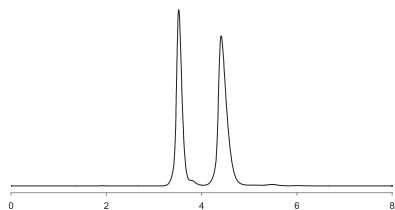
## DL-Penicillamine



Column: ChiroSil ME NF RCA(+) 5 $\mu$ m  
 Dimension: 150 X 4.6mm  
 Mobile phase: 10mM H<sub>2</sub>SO<sub>4</sub> / ACN = 10 / 90  
 Flow rate: 0.8 ml/min  
 Detection: UV 210nm  
 Temperature: 15°C

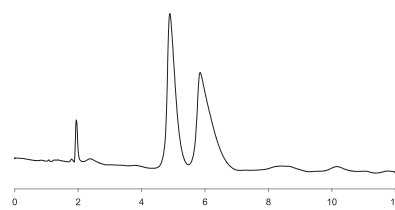
## 7-7. Enantiomer separations-ChiroSil ME

## DL-4 - Nitro - Phenylalanine



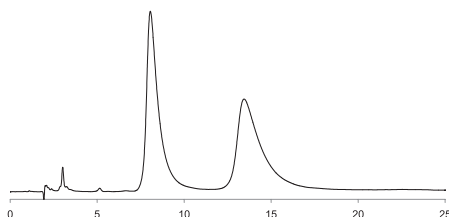
Column: ChiroSil ME NF RCA(+) 5 $\mu$ m  
 Dimension: 150 X 4.6mm  
 Mobile phase: 0.01% H<sub>3</sub>PO<sub>4</sub> / MeOH = 40 / 60  
 Flow rate: 1.0 ml/min  
 Detection: UV 210nm  
 Temperature: 40°C  
 $k'$  : 1.91  $\alpha$ : 1.51

## DL-Homo - Serine



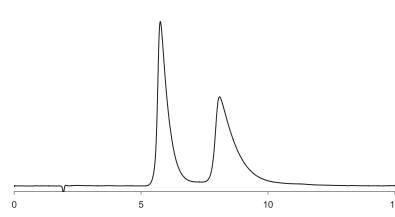
Column: ChiroSil ME NF RCA(+) 5 $\mu$ m  
 Dimension: 150 X 4.6mm  
 Mobile phase: 0.01% H<sub>3</sub>PO<sub>4</sub> / MeOH = 30 / 70  
 Flow rate: 1.0 ml/min  
 Detection: UV 210nm  
 Temperature: 20°C  
 $k'$  : 1.51  $\alpha$ : 1.32

## DL-BPA



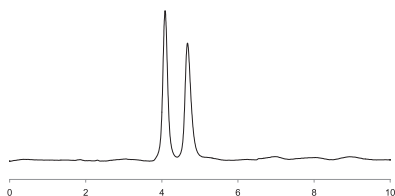
Column: ChiroSil ME NF RCA(+) 5 $\mu$ m  
 Dimension: 150 X 4.6mm  
 Mobile phase: 0.01% H<sub>3</sub>PO<sub>4</sub> / MeOH = 30 / 70  
 Flow rate: 1.0 ml/min  
 Detection: UV 210nm  
 Temperature: 0°C  
 $k'$  : 3.14  $\alpha$ : 1.88

## DL-Thienylalnine



Column: ChiroSil ME NF RCA(+) 5 $\mu$ m  
 Dimension: 150 X 4.6mm  
 Mobile phase: 0.01% H<sub>3</sub>PO<sub>4</sub> / MeOH = 30 / 70  
 Flow rate: 1.0 ml/min  
 Detection: UV 210nm  
 Temperature: 0°C  
 $k'$  : 1.96  $\alpha$ : 1.61

## DL-Naphtylalnine



Column: ChiroSil ME NF RCA(+) 5 $\mu$ m  
 Dimension: 150 X 4.6mm  
 Mobile phase: 5mM HClO<sub>4</sub> / MeOH = 50 / 50  
 Flow rate: 0.5 ml/min  
 Detection: UV 210nm  
 Temperature: 10°C  
 $k'$  : 0.08  $\alpha$ : 2.99