

Econo-Cap & Heliflex GC Columns

Heliflex AT[®]-624+

- EPA メソッド 624向けにテスト
- 他社相当品: DB[™]-1301, Rtx[®]-1301, MEGA-624, Rtx[®]-624, HP-1301, HP-624, DB[™]-624, 007[™]-624, 007[™]-1301, SPB[™]-1301, SPB[™]-624, ZB-624

Heliflex AT [®] -624+ Specifications	
Phase:	6% Cyanopropylphenyl - 94% Methylpolysiloxane
Polarity:	Intermediate Polarity
USP Code:	G43
Ideal For:	EPAメソッド 524, 601, 602, 624, 8240, 8260 溶媒分析

Heliflex AT[®]-624+ Capillary Columns

Length	i.d.	Film	Temp. Limits* min.-max.	Old Reference	Part No.
30m	0.25mm	1.40µm	-20-240/260°C	13754	8635239
	0.32mm	1.80µm	-20-240/260°C	13756	8635278
	0.32mm	3.00µm	-20-240/260°C	13780	8635279
	0.53mm	3.00µm	-20-240/260°C	16889	8635317
60m	0.25mm	1.40µm	-20-240/260°C	13503	8635333
	0.32mm	1.80µm	-20-240/260°C	13799	8635375
	0.53mm	3.00µm	-20-240/260°C	13800	8635400
75m	0.53mm	3.00µm	-20-240/260°C	13937	8635403

Heliflex AT[®]-225+

- 他社相当品: DB[™]-225, HP-225, Rtx[®]-225, OV[™]-225, RSL-500, 007-225, CP-Sil 43CB, BP-225, PE-225, MEGA-225

Heliflex AT [®] -225+ Specifications	
Phase:	50% Cyanopropylphenyl - 50% Methylpolysiloxane
Polarity:	Mid to High Polarity
USP Code:	G19
Ideal For:	糖類、溶媒

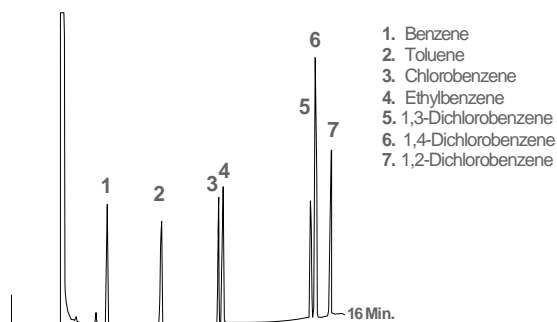
Heliflex AT[®]-225+ Capillary Columns

Length	i.d.	Film	Temp. Limits* min.-max.	Old Reference	Part No.
15m	0.25mm	0.25µm	40-240°C	13883	8635139
25m	0.25mm	0.20µm	40-240°C	912525	M8635537
30m	0.25mm	0.25µm	40-240°C	13773	8635240
	0.32mm	0.25µm	40-240°C	13775	8635264
	0.32mm	0.30µm	40-240°C	913230	8635265
	0.53mm	1.20µm	40-220°C	915130	8635308

*: Maximum Temperature range may change depending on stationary phase film thickness.

In this catalog are reported only the most common GC columns dimensions and part numbers.
Contact us for other items and custom products.

EPA Method 602 - Purgeable Aromatics



Column: Heliflex AT[®]-624+, 30m x 0.32mm x 1.80µm
Part No. **8635278** (Old Ref. 13756)

Temp: 90°C (7min hold) to 180°C at 10°C/min

Carrier Gas: Helium at 1.1mL/min

Detector: FID

Custom Capillary Coiling **Available**
 Custom Capillary Column Dimensions **Available**
 Custom Capillary Column with Integral Guard **Available**
 FAST-GC narrow-bore Column Dimensions **Available**

Contact us for more info